

# Evacuation Information Package



## Introduction

### Purpose and Background

In an emergency event, Claresholm citizens will be provided with information on what is happening and what as members of our community they may be asked to do.

You, may be asked to partially or fully evacuate. This is called following the directions of the local authority. The local authority is the Council and Administrative team that is responsible for the public services for a community. It is very important that the community follow the directions that they are being given for their protection.

Education is an essential component of a quick and timely response. Citizens that understand the events that will transpire once an emergency impacts our community are prepared. To help you be prepared for an evacuation situation we want you to:

1. Be aware of **what evacuation materials** (72-hour E-Prep kit) to bring with you. The “**Are you ready?**” package helps you identify this information.
2. Be aware of **how to evacuate** your home (muster point).
3. Be aware of **where you can go** and **what you should do and listen for**.
4. Understand the **progressive steps** to an evacuation.
5. Understand **what zone** your house and/or businesses is in.

## Table of Contents

### Introduction

Purpose and Background	1
Table of Contents	2

### Planning in Advance

Emergency Preparedness	3
Communication During an Event	4
Road Closures	6

### How to Evacuate

Where to Go – In Town	6
Where to Go – Out of Town	6
How to Communicate you have Evacuated (Home or Business)	7
Registration	8
Stages of Evacuation	9 and 10

### Evacuation Zoning

Zone Information	10
Overall Zone Map	11
Zone 1	12
Zone 2	13
Zone 3	14
Zone 4	15
Zone 5	16
Zone 6	17

The contents of this “**Evacuation Plan**” package and the “**Are you ready?**” package are designed to help support your understanding of the steps and process that we as a community can take to build our preparedness, response and recovery skills.

## Planning in Advance

### Emergency Preparedness

Preparedness in the event of an emergency is when a community is mentally and physically ready for an event. The community can respond and recover from the emergency with more ease and less impact **during** and **after** the event. **This state of preparedness builds resiliency in a community.** In an emergency, by having available some basic supplies, and knowing what to do and where to go, you will be more physically and mentally prepared.

By using the “**Are you ready?**” information package you can:

1. Build a **72-hour E-Prep kit**.
2. Build a plan for yourself and your family for how you will stay connected and respond, such as a Muster point and Communication Plan.
3. Have with you, important numbers and documents to aid in your recovery.

Things to consider when personalizing your kit:

1. **Individuals** with disabilities and special needs will want to include additional support items.
2. **Individuals** with severe allergies, chronic medical conditions or special medical needs will want to include the necessary supplies.
3. **Individuals and/or Businesses** who may need to save and/or transport key data or keep their business going in the event of an emergency should develop plans for security and mobility.



## Communication During an Event

There are multiple ways that we will communicate the facts of the emergency and if necessary, the need to evacuate residents during an emergency event. It is very important that citizens follow the directions that are provided, for example:

- ❖ If you are asked to stay in your home then please stay.
- ❖ If a certain zone is asked to evacuate, there is no need for other zones to evacuate.

The following platforms, will help us connect with each other:

- **Connect by All Net** – The Town of Claresholm text, call and email communication platform (sign up at [www.claresholm.ca](http://www.claresholm.ca)).
- **Website** – [www.claresholm.ca](http://www.claresholm.ca) is the official website of the Town of Claresholm and information contained on this site is kept as up to date and accurate as possible utilizing data compiled from all of our available resources.
- **Social Media** – The Town of Claresholm maintains social media profiles on both Facebook [@TownofClaresholm](https://www.facebook.com/TownofClaresholm) and Twitter [@ClaresholmTown](https://twitter.com/ClaresholmTown) and Instagram.
- **Alberta Emergency Alert (AEA)** – The Town of Claresholm will utilize the official Alberta Emergency Alert system to communicate information and provide status updates during emergency events. Emergency alert information can be found at [www.emergencyalert.alberta.ca](http://www.emergencyalert.alberta.ca). The AEA notification app. is also available for both iPhone and Android for free **and works with the Weather Network app.** Critical AEA's will interrupt broadcasts on T.V. and radio.

The town will utilize the office main line 403-625-3381 to stay connected with its residents during an emergency. This becomes the **Emergency Information Line.**

**1-403-625-3381**  
**Emergency Information Line**

## Road Closures

Road closures are in place to control the flow of traffic and keep citizens out of the danger zone.

During an evacuation, access to the community is reduced for the safety of residents as well as first responders, as such, we ask that you **respect road blocks/closures** and do not attempt to bypass or remove the road blocks/closures. At all times follow the direction of **local authorities** and **emergency responders** which could be the:

- RCMP members,
- Community Peace Officer's,
- Claesholm Fire Department members,
- Public Works employees,
- Volker Stevin employees,
- Outside agencies that may be asked to assist the Town, such as neighboring fire departments, the Sheriffs department or the military.



## How to Evacuate

### Where to Go – In Town

In the event you are asked to evacuate, you will be asked to leave the evacuation area, relocate to an **Emergency Reception Centre (ERC)** or if you choose, a safe distance away at an alternate location.

In an emergency the **Emergency Reception Centre (ERC)** is located at:

1. Claresholm Community Centre (all season access)
  - 5920 – 8<sup>th</sup> Street West

If the Community Centre is inaccessible and/or additional reception centres are needed, they will be located at the following locations in order or priority as follows:

2. Seniors Drop-In Centre (all season access)
  - 5009 – 2<sup>nd</sup> Street West
3. Arena (summer access only)
  - 4918 – 2<sup>nd</sup> Street West
4. Curling Rink (summer access only)
  - 430 – 53<sup>rd</sup> Avenue East

If you choose an alternate location to evacuate to other than the reception centre, like the home of a friend or relative, you **MUST NOTIFY** the town office at 403-625-3381, so we can account for your location and safety.

### Where to Go – Out of Town

Should the in-town reception center need to evacuate to another community, directions on where to go and how to get there will be provided at the designated in-town reception centre. The reception centre volunteers will direct residents where to go.

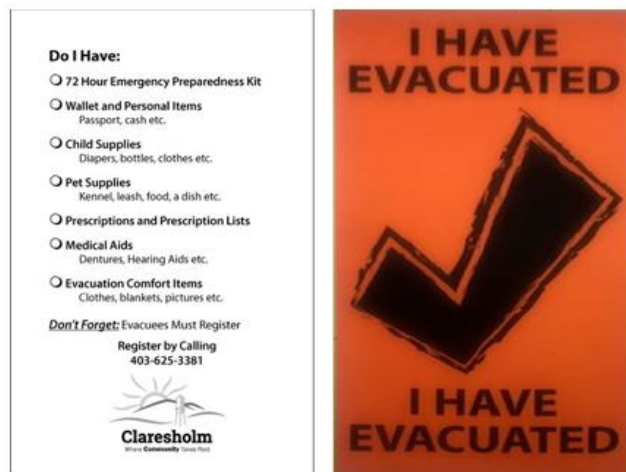
If no reception centre was set up in-town because of a town wide evacuation follow the direction of local authorities, Alberta Emergency Alert or one of the Town's approved communication methods.



## How to Communicate you have Evacuated (Home or Business)

One vital component to this process is **Communication**. Communicating the safe evacuation of your property to emergency response personnel will reduce the time they spend in the evacuation zone making sure it is evacuated.

**The image below** is an example of the **Claresholm Evacuation Sticker**. In the event of an evacuation this sticker should be pinched in the door jam of your front door that faces the main street or taped to your front window that faces the main street.



## Registration

The safety, security and location of our residents is one of our primary focuses during any emergency event and emergency evacuation.

When you enter an evacuation reception center, you will be asked to complete a **registration form**, regardless of your intention to stay at the center or not.

Do I have to go to the reception center?

- **No**, you may have family, friends or a hotel outside the community that you may choose to stay at, however
- **Yes, you do have to register, PLEASE.** If you are not attending the reception center, we ask that you call 403-625-3381.

**Why is evacuation registration important?**

While you are not legally required to register, we want to know that you and your family have safely made it out of the evacuation zone.

We track the residences that have been identified as evacuated in order to support evacuation efforts door to door, as well as to inform neighboring communities of a potential significant influx of residents.

This information is also used to support family members who may be enquiring into your safety or your evacuation status.

# Register by Calling

# 403-625-3381



## Stages of Evacuation

There are **three (3) stages** that the emergency management team will work through in an evacuation event. Ideally a heightened state of readiness occurs first, which is where the Town identifies and monitors an event that may have the potential to impact Town residents. Examples of events that would activate a heightened state of readiness are weather forecasts or communications from emergency services providers. Often a state of heightened readiness passes without incident.

As soon as conditions **show potential for impact** upon the residents of Claresholm, the Town will initiate **Stage 1 = an Evacuation Alert.**

### 1. Evacuation Alert

The purpose of the Evacuation Alert is to inform the residents of a potential or current threat exists which could lead to an Evacuation Order. An Evacuation Alert allows for the residents to begin preparations to evacuate by providing them with time to:

- ❖ Fuel vehicles up.
- ❖ Gathering belongings, documents and your 72-hour E-Prep kit.
- ❖ Gather information regarding the evacuation from the Evacuation Alert.

### 2. Evacuation Order

**Depending on the mechanism and speed of the hazard, an Evacuation Order may be issued without a prior Evacuation Alert.** An Evacuation Order is issued when the impacted residents should **leave the specified area immediately**. An Evacuation Order is **mandatory**.

Any person who refuses to leave when an Evacuation Order is issued, will not be forcibly removed from their residence, however, all public services are suspended during an Evacuation Order and those choosing not to leave **may not** be rescued or provided with other emergency response services.

**If you cannot evacuate your home call 911**

### 3. Evacuation Rescind

The decision to rescind an Evacuation Order will occur when the Emergency Management team determines that it is safe to return. It is understandable that evacuees' will have a desire to return to their homes as soon as possible, however a return cannot occur until the evacuated area is declared safe and can adequately support the returning population.

## Evacuation Zoning

### Zone Information

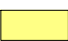
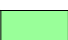





The Town of Claresholm has been divided into six (6) evacuation zones. You will want to familiarize yourself with the zones to identify the areas that may be important to you. **Some things to look for are:**

- Where your home is, where work is, where your daycare or schools are, and
- Where the Hospital, senior's facilities and Emergency Reception Centers are.

It is also important to identify zone locations of individuals you might be helping to evacuate. Please review the maps below and identify which evacuation zones are relevant to your personal evacuation plan.

**NOTE:** • **Zone numbers DO NOT indicate priority.**

# TOWN OF CLARESHOLM EVACUATION ZONES

-  ZONE 1
-  ZONE 2
-  ZONE 3
-  ZONE 4
-  ZONE 5
-  ZONE 6
-  TOWN BOUNDARY

MAP PREPARED BY:  
 OLDMAN RIVER REGIONAL SERVICES COMMISSION  
 3105 16th AVENUE NORTH, LETHBRIDGE, ALBERTA T1H 5E8  
 TEL. 403-329-1344  
 \*NOT RESPONSIBLE FOR ERRORS OR OMISSIONS\*

PLOT SCALE 1 : 16 000

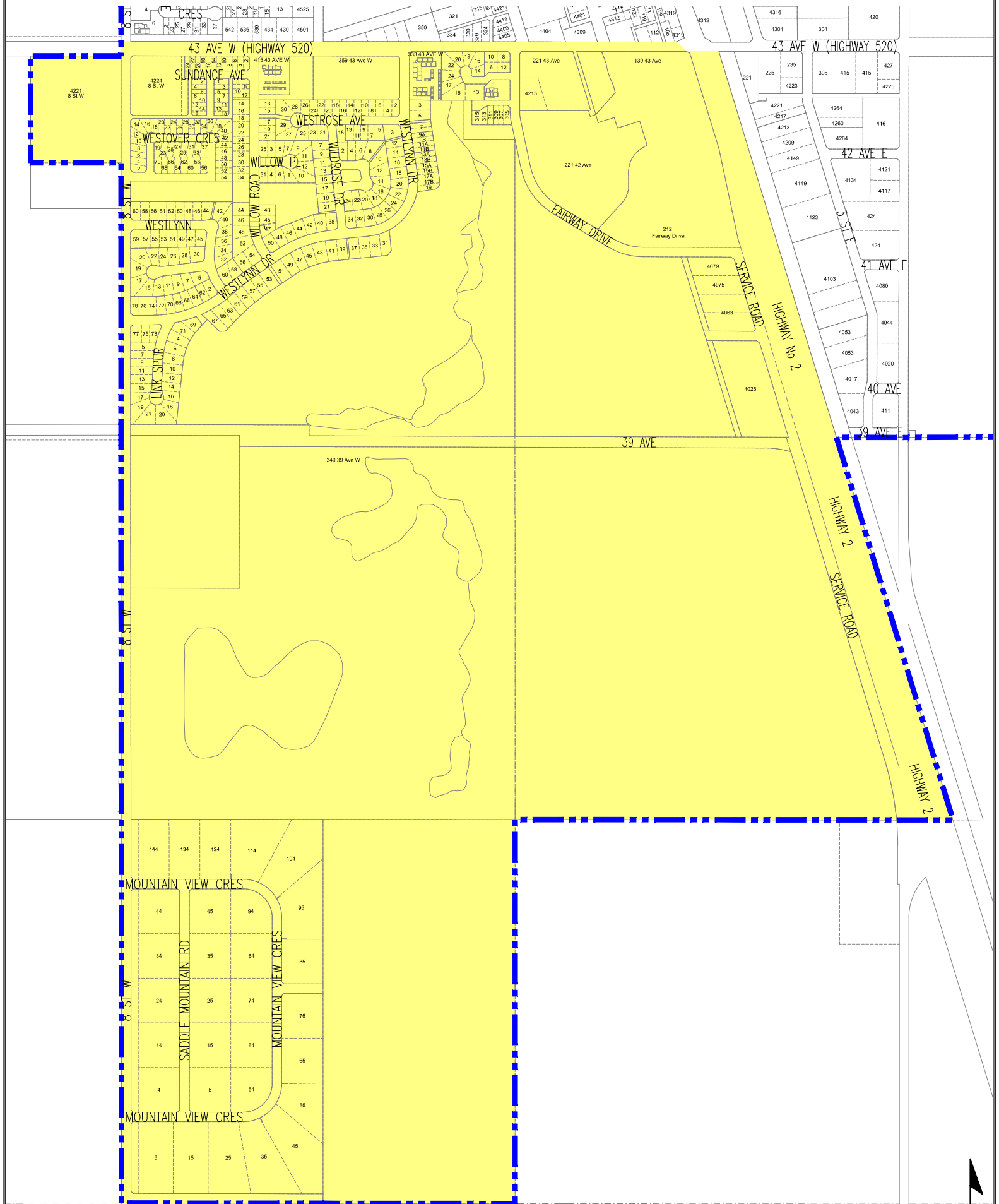


0 100 200 300 400 Metres

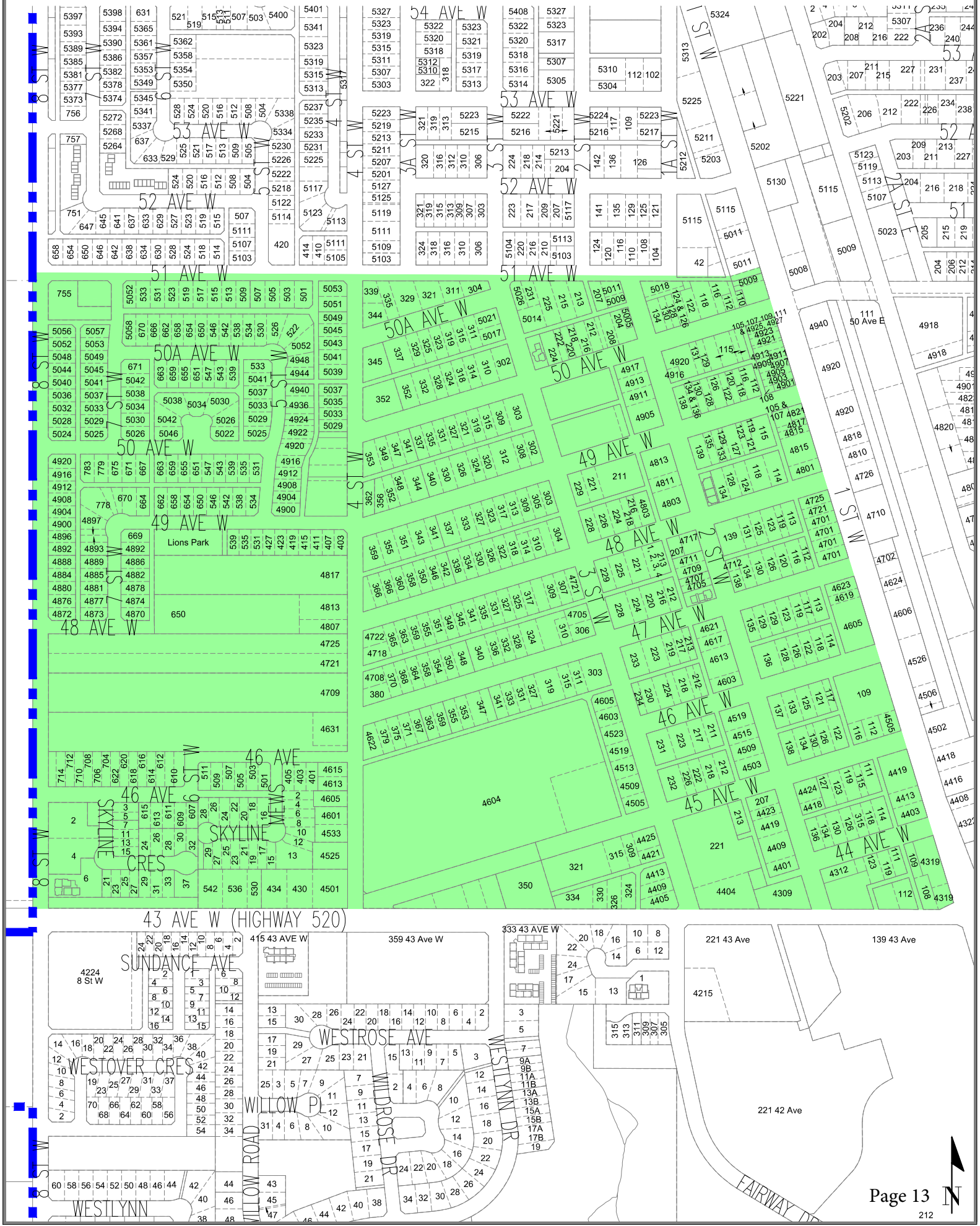
September 12, 2018  
 N:\Willow-Creek-MD\Claresholm\Claresholm Projects\  
 Claresholm Evacuation Zones.dwg



# Evacuation Zone 1

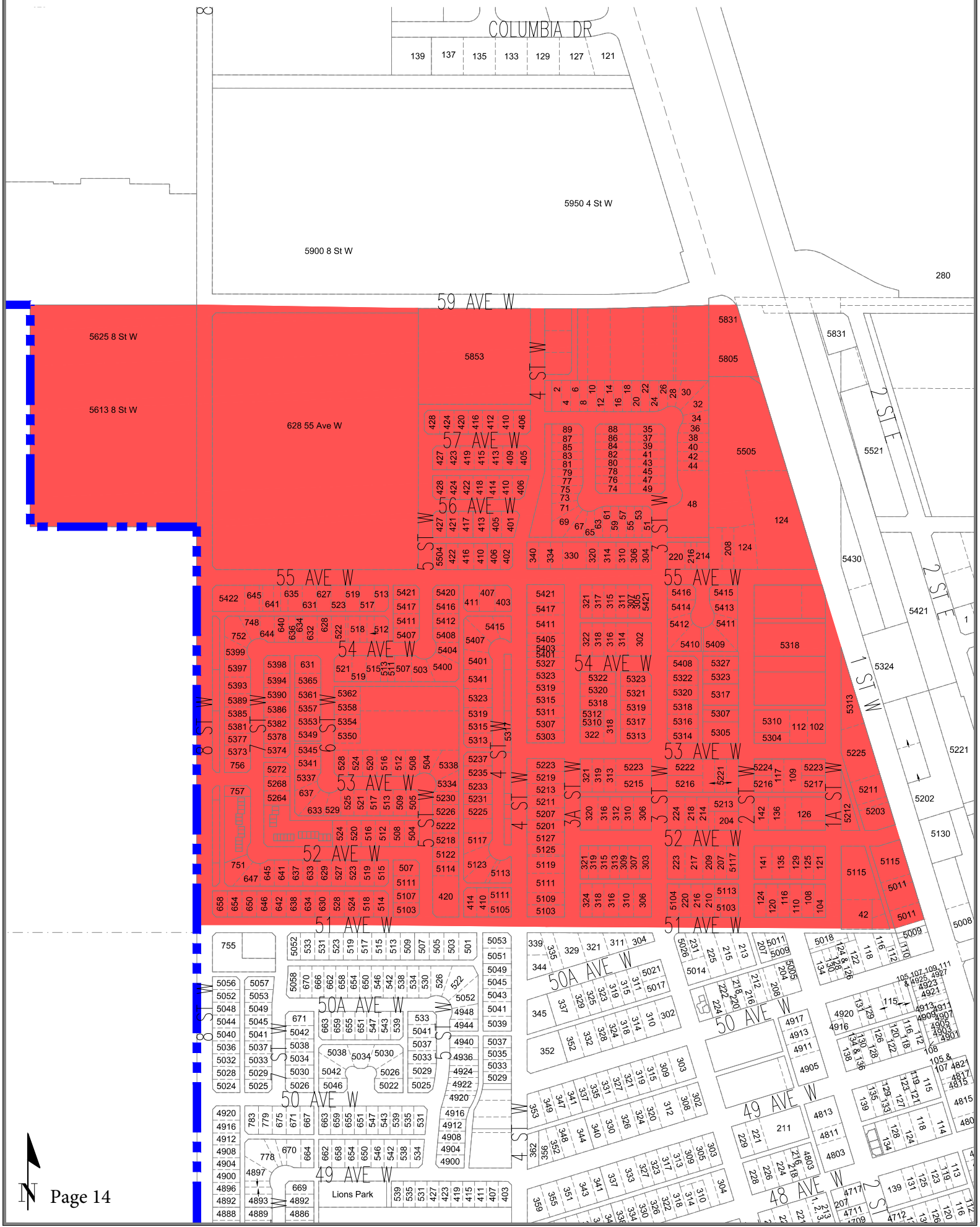


# Evacuation Zone 2

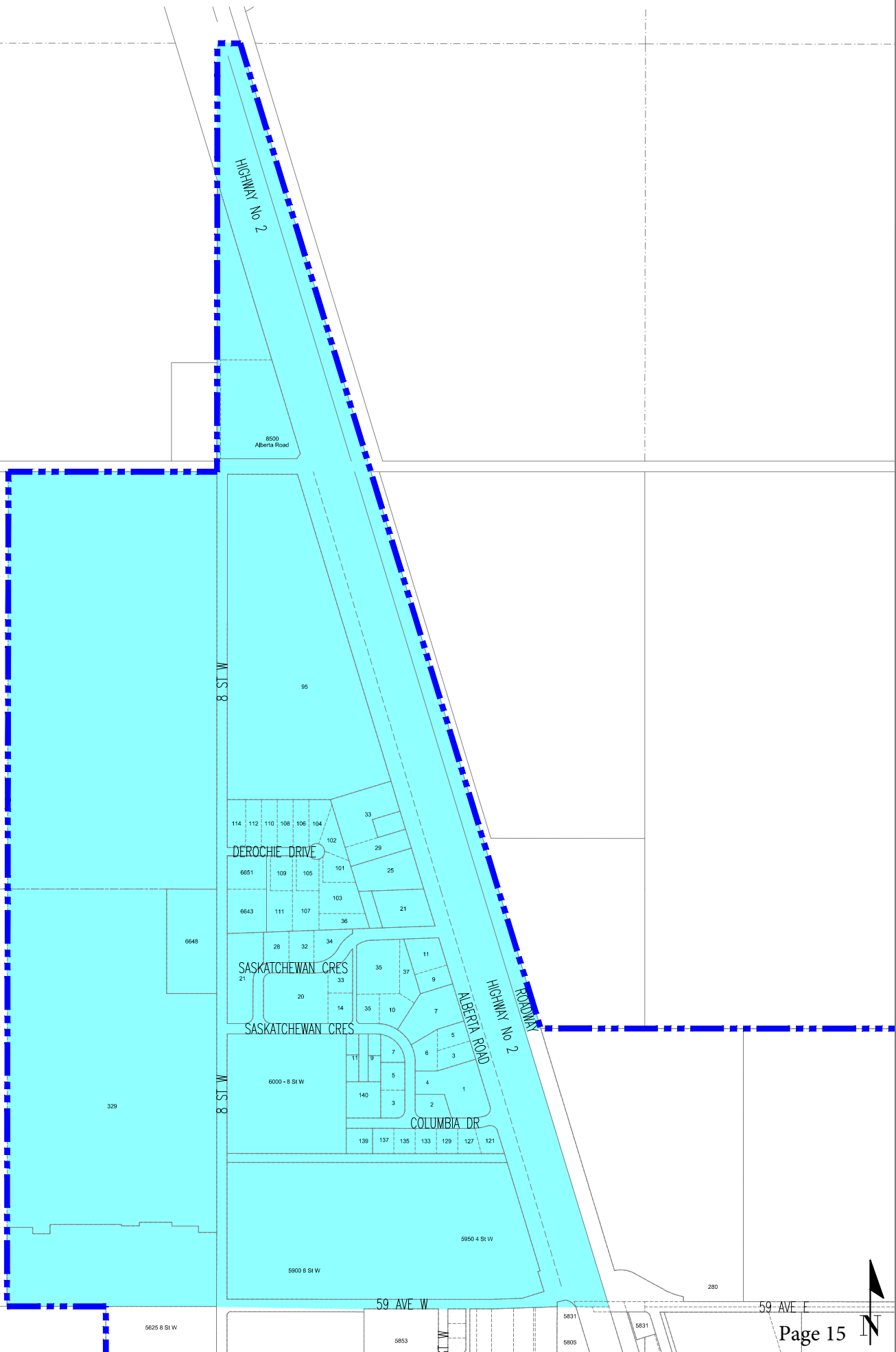




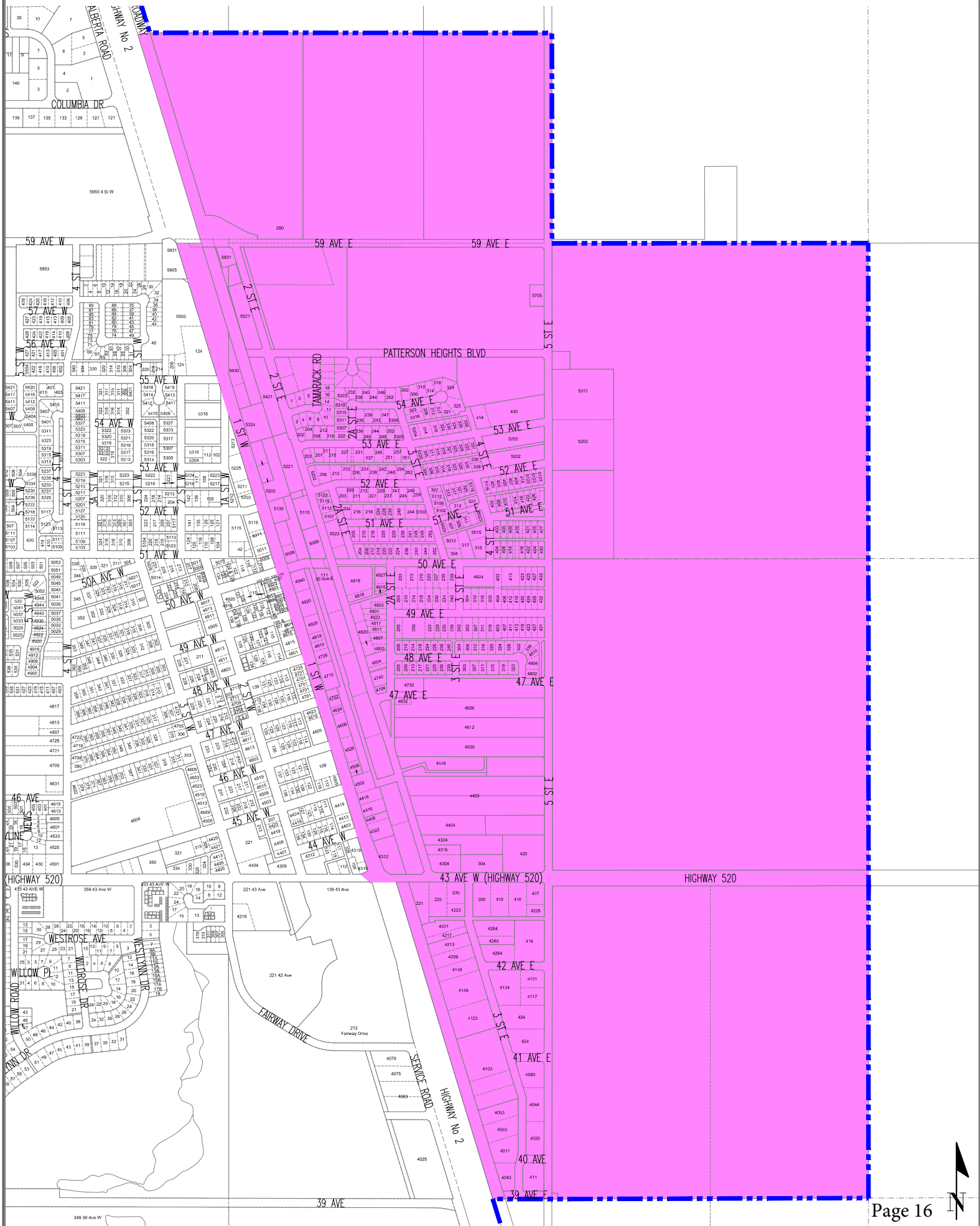
# Evacuation Zone 3



# Evacuation Zone 4



# Evacuation Zone 5





# Evacuation Zone 6

